



**PRODUCT CATALOG
PORK MEAT**

December 2023



TresBomm Agri is one of the 400 largest and best companies in Brazil (2022):



DISCLAIMER: all products presented in this document are exported by Tresbomm Comércio e Exportação de Grãos Ltda, registered with CNPJ 15.660. 513/0001-04, headquartered at Rua Dom Pedro I, 1190, Centro, Palotina, Paraná, Brazil, CEP 85950-000, and produced by Kaefer Agro Industrial Ltda, registered with CNPJ: 84.874.726/0015-49, headquartered at Rodovia BR 277 - Km 451, S/N, Vila Industrial, Laranjeiras do Sul, Paraná, Brazil, CEP 85303-495. Further information about our company can be found on the website tresbomm.com.br.

INDEX

| | |
|--------------------------------|-----------|
| About TresBomm..... | 04 |
| Main Clients..... | 05 |
| Respecting The Enviroment..... | 06 |
| Quality and Origin..... | 07 |
| Our Numbers..... | 08 |
| International Presence..... | 09 |
| Our Products..... | 10 |
| Our Packages..... | 17 |



TresBomm Agri: company based in Palotina, Paraná (southern Brazil), focused on grain origination



Três & Riedi Bomm: families with over half a century of experience in Brazilian agribusiness



Markets: grain origination (core business), animal feed, animal protein (pork meat), vegetable oils, specialty foods and grains



Worldwide presence: customers in Latin America, Europe, Africa, the Middle East and Asia



Recognized performance: one of the 400 largest* companies in Brazil

*Exame Magazine (2022)

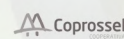
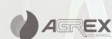
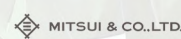
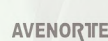
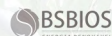


TresBomm Foods: TresBomm Agri's animal protein operation based in Toledo, Paraná (southern Brazil), responsible for pig production, trade and export of pork meat.

IN OTHER WORDS, **WITH TRESBOMM**
YOU HAVE THE **COMPLETE VERTICALIZATION**
OF THE PRODUCTION CHAIN WITH **GUARANTEED QUALITY:**

FROM FARM TO TABLE.

TresBomm Agri is proud to have a portfolio of respected clients in Brazil and abroad. This has only been possible thanks to hard work and, above all, the relentless pursuit of quality through the establishment of strategic partnerships with independent producers committed to the levels of excellence demanded by the company. And with TresBomm Foods is no different. From the grains needed to feed our pigs to the temperature of the trucks that transport our meat, we ensure that our entire product line is of the highest quality. After all, as well as consuming everything we sell, our brand also bears our surnames and more than half a century of history in Brazilian agribusiness.



RESPECTING THE ENVIROMENT

TresBomm Agri is aware of its responsibilities, especially in a market as important for the environment and society as agribusiness. To this end, the company is constantly working to internally improve the management of its environmental, social and governance (ESG) indicators, aligning them with the best international practices, especially those established in the 17 Sustainable Development Goals (SDGs) proposed by the United Nations (UN).

We make sure that all our processes and services are rigorously audited by specialized companies. In this way, we continue to improve not only the management of our business, but also our relationship with the ecosystem. And we make sure that all the contracts we sign with our business partners and service providers follow this direction, combining common objectives, tangible goals, good practices and sustainability.



Slaughtering/Cutting plant
Laranjeiras do Sul, Paraná



Biodigester
Aurora do Iguaçu, Paraná



TresBomm's pig farm
Iporã, Paraná

Grain processing plant in Palotina, Paraná

SUSTAINABLE DEVELOPMENT GOALS



TresBomm Foods believes that the origin of pork is fundamental to ensuring the quality of the final product.

We make sure that all pigs are raised on farms that guarantee a balanced diet and meet animal welfare standards, and are subjected to appropriate health controls to ensure that there is no contamination by diseases or substances harmful to human health.

At the slaughterhouse, all animals are slaughtered following strict food safety criteria and due supervision by the competent health authorities, ensuring that all meat is processed and packaged properly, in accordance with all national and international quality certifications, licenses and standards.

Finally, we reiterate that our meat is also stored and transported under appropriate humidity and temperature conditions. In this way, we guarantee the maintenance and preservation not only of quality, but also of one of our main assets: taste.

All the products presented in this catalog are duly certified and approved by the Brazilian authorities



Production line (Laranjeiras do Sul, Paraná)



OUR NUMBERS



Feed production: **>200 mt/day**



Matrices in the process: **>10.000**



Finishing stock: **>100.000**



Number of integrated families: **>60**



Slaughter: **>1.000 animals/day**



Meat cuts: **>100 mt/day**



As mentioned, Tresbomm Foods is part of Tresbomm Agri, one of the largest grain and farm input suppliers in Paraná. Therefore, every pig in the field is fed with the best feed and raw materials on the market, guaranteeing the highest quality meat. With a diversified portfolio, this singular quality has been nationally recognized and is co-responsible for the brand's expansion globally. So, how about continuing to expand together? We're sure that our quality and cost-effectiveness will surprise you!

TALK TO OUR SALES TEAM!







Our Products

FROZEN **PORK MEAT**



 **PORK BELLY (BONELESS/SKIN ON/SINGLE RIBBED)**
CG LP-VS MERCOSUL



 **DESCRIPTION**



- **Length:** 50 cm
- **Width:** 20 cm
- **Thickness of loin:** 1/3 of the total height (max)
- **Pieces per box:** 4 to 6
- **Product weight:** 3 to 5 kg
- **Weight of box:** 18 to 23 kg
- **Internal code:** 5766

 **PORK BELLY (BONELESS/SKINLESS/SHEET RIBBED)**
CG PT-VS



 **DESCRIPTION**



- **Length:** 50 cm (max)
- **Width:** 20 to 45 cm
- **Thickness of loin:** 3 cm (max)
- **Pieces per box:** 4 to 6
- **Product weight:** 3 to 5 kg
- **Weight of box:** 20 to 25 kg
- **Internal code:** 3971

 **PORK LOIN WITH VERTEBRAE (SKINLESS)**
CG IWP-VS MERCOSUL



 **DESCRIPTION**



- **Thickness of loin:** 0.5 cm (max)
- **Pieces per box:** 3 to 5
- **Product weight:** 4 to 7 kg
- **Box weight:** 15 to 24 kg
- **Internal code:** 5768

 **PORK SPARE RIBS (BONE-IN/SKINLESS)**
CG IWP-VS HK



 **DESCRIPTION**



- **Sternum bone:** absent
- **Rib tip:** absent
- **Pieces per box:** 5 to 8
- **Product weight:** 3 to 5 kg
- **Box weight:** 19 to 24 kg
- **Internal code:** 5787

PORK TENDERLOIN

CG PT-VS 20KG ARG



DESCRIPTION

- **Pieces per box:** 15 to 20
- **Piece weight:** 0.8 to 1.3 kg
- **Box weight:** 20 kg
- **Internal code:** 3974



PORK LOIN (BONELESS/SKINLESS)

CG IWP-VS 20KG MERCOSUL



DESCRIPTION

- **Thickness of loin:** 0.5 cm (max)
- **Pieces per box:** 5 to 7 pieces
- **Piece weight:** 2 to 4 kg
- **Box weight:** 19 to 23 kg
- **Internal code:** 3973



PORK SHOULDER 90% (BONELESS/SKINLESS)

CG IWP-VS 20KG MERCOSUL



DESCRIPTION

- **Fat content:** 5% (max)
- **Pieces per box:** 2 to 4 units
- **Piece weight:** 5 to 8 kg
- **Box weight:** 19 to 21 kg
- **Internal code:** 7532



PORK SHOULDER 95% (BONELESS/SKINLESS)

CG IWP-VS 20KG



DESCRIPTION

- **Fat content:** 10% (max)
- **Pieces per box:** 2 to 4 units
- **Piece weight:** 5 to 8 kg
- **Box weight:** 18 to 23 kg
- **Internal code:** 5877



 **PORK SKIN (A)**
CG PT-VS 20KG MERCOSUL



 **DESCRIPTION**

- **Box weight:** 20 kg
- **Internal code:** 5886



 **PORK SKIN (LOIN)**
CG PT-VS 20KG MERCOSUL



 **DESCRIPTION**

- **Box weight:** 20 kg
- **Internal code:** 5884



 **PORK LEG 100% (BONELESS/SKINLESS)**
CG IWP-VS 20KG MERCOSUL



 **DESCRIPTION**

- **Fat content:** absent
- **Leg in parts:** rump, outside flat, topside, eyeround, knuckle
- **Box weight:** 20 kg
- **Internal code:** 5865



 **PORK LEG 90% (BONELESS/SKINLESS)**
CG IWP-VS 20KG

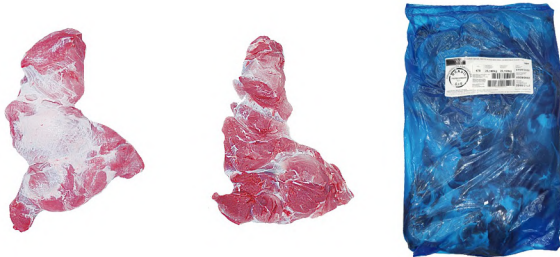


 **DESCRIPTION**

- **Fat content:** 10% (max)
- **Pieces per box:** 2 to 3
- **Piece weight:** 8 to 12 kg
- **Box weight:** 18 to 23 kg
- **Internal code:** 7533



 **PORK LEG 96% (BONELESS/SKINLESS)**
CG IWP-VS 20KG MERCOSUL



 **DESCRIPTION**

- **Fat content:** 4% (max)
- **Pieces per box:** 2 to 3
- **Piece weight:** 8 to 12 kg
- **Box weight:** 18 to 23 kg
- **Internal code:** 5871



 **PORK COLLAR (BONELESS/SKINLESS)**
CG PT-VS ARG



 **DESCRIPTION**

- **Pieces per box:** 7 to 10
- **Box weight:** 19 to 23 kg
- **Internal code:** 3972



 **PORK CUTTING FAT (LOIN)**
CG PT-VS 20KG MERCOSUL



 **DESCRIPTION**

- **Box weight:** 20 kg
- **Internal code:** 5879



 **PORK CUTTING FAT (LEG/SHOULDER)**
CG PT-VS 20KG MERCOSUL



 **DESCRIPTION**

- **Box weight:** 20 kg
- **Internal code:** 5883



 **PORK TRIMMING 50% (BONELESS)**
CG PT- VS 20KG MERCOSUL



 **DESCRIPTION:**

- **Meat/fat ratio:** 50% / 50%
- **Box weight:** 20 kg
- **Internal code:** 5888



 **PORK TRIMMING 80% (BONELESS)**
CG PT-VS 20KG MERCOSUL



 **DESCRIPTION:**

- **Meat/fat ratio:** 80% / 20%
- **Box weight:** 20 kg
- **Internal code:** 5875





PRIMARY PACKAGING

- **Material (premium):** PVC plastic film
- **Material (raw material):** blue HDPE polyethylene bag
- **Label:** BOPP or HDPE adhesive with atoxity and microbiological report with registration certificate



SECONDARY PACKAGING

- **Material:** cardboard and PVC
- **Label:** BOPP adhesive with atoxity and microbiological report with registration certificate
- **Box ribbon:** yes



ABOUT OUR BOXES

- **Material:** cardboard
- **Model:** die-cutting
- **Length:** 54,8 cm
- **Width:** 38,8 cm
- **Height:** 16,0 cm
- **Box lid:** yes
- **Weight support:** up to 25 kg



ABOUT OUR PALLETS

- **Material:** PBR-treated wood
- **Packaging:** special stretch film 25 microns/PEBD low linear density
- **Weight support:** up to 1.000 kg



✉ sac@bomm.com.br
🌐 bomm.com.br
Rua Dom Pedro I, 1190, Centro
📍 CEP 85950-000 Palotina, Paraná, Brazil

